



ALBERTINA  
KERR

424 NE 22nd Avenue  
Portland, OR 97232

ALBERTINAKERR.ORG

Non-Profit Org.  
U.S. Postage  
PAID  
Portland, OR  
Permit No. 2009

## FIND THE TIME TO SUPPORT KERR

### MARCH 17, 2010

#### Snapshot Series

Game Day at Multnomah Athletic Club. Visit residents of Youth Group Homes & see your support in action.

### APRIL 11, 2010

#### Race for the Roses

Portland's popular half-marathon, 5K and 10K.  
Race4theRoses.org

### MAY 14, 2010

#### Spotlight on Kerr, "Venetian Masked Ball"

Annual Gala Dinner & Entertainment

### SEPTEMBER 2010

18th Annual Albertina Kerr Centers Foundation Classic  
Golf Tournament, Pumpkin Ridge Golf Club

### OCTOBER 2010

103rd Board of Directors Meeting & Community Awards

INFORMATION & REGISTRATION: ALBERTINAKERR.ORG / 503-239-8101

### VISIT ALBERTINA'S RESTAURANT & SHOPS

At 424 NE 22nd Avenue  
Enjoy the eclectic shops and  
fine restaurant in the historic  
Old Kerr Nursery, where  
good will and good taste are  
closer than you think.

For hours & information:  
[kerrshops.org](http://kerrshops.org)

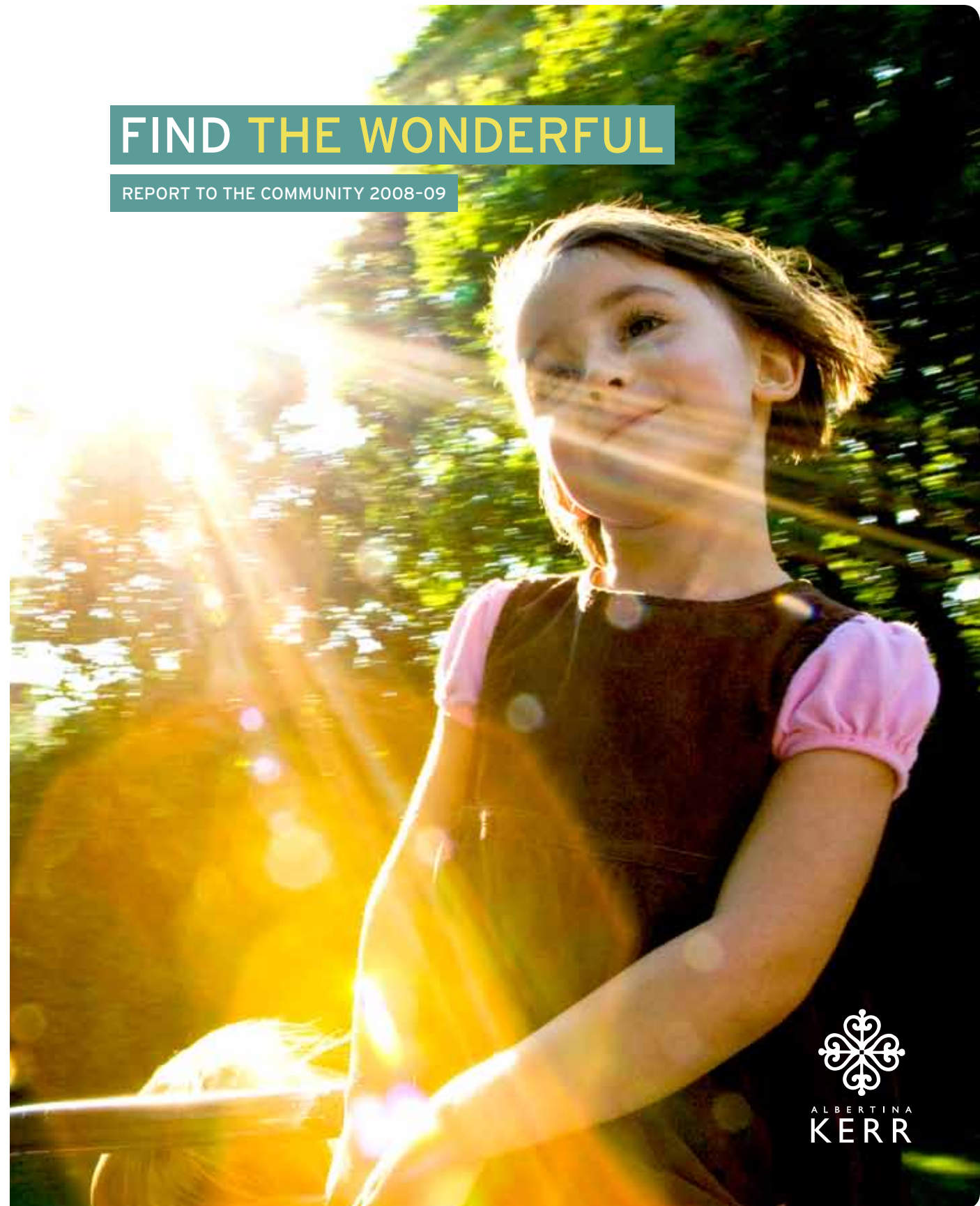
### VISIT KERR BIKES

On the Portland Waterfront  
Fun bike rentals for the  
whole family.

For hours & information:  
[kerrbikes.org](http://kerrbikes.org)

## FIND THE WONDERFUL

REPORT TO THE COMMUNITY 2008-09



ALBERTINA  
KERR

EVERY DAY, ALBERTINA KERR  
HELPS CHILDREN, ADULTS &  
FAMILIES OF OREGON WHO FACE  
MENTAL HEALTH CHALLENGES &  
DEVELOPMENTAL DISABILITIES,  
EMPOWERING THEM TO LEAD  
FULLER, SELF-DETERMINED LIVES.

THOSE WHO SUPPORT US,  
WHETHER EMPLOYEES,  
VOLUNTEERS OR DONORS,  
EXPERIENCE THE JOY OF  
GIVING BACK TO THEIR  
COMMUNITY, KNOWING  
THAT MORE SMILES  
GRACE MORE FACES ON  
MORE DAYS BECAUSE OF  
THEIR EFFORTS.



WHEN WE WORK TOGETHER,  
WE CREATE SOMETHING  
INCREDIBLE. WE CREATE A  
COMMUNITY THAT IS  
BALANCED & COMPLETE.

WE FIND WHAT'S TRULY  
WONDERFUL IN ALL OF US.



# AT ALBERTINA KERR, WE FIND POTENTIAL IN EVERYONE. WE FIND HOPE IN FAMILIES. WE FIND STRENGTH IN OUR COMMUNITY.

## We find what's wonderful in all of us.

Together with our supporters, we help children and families faced with mental health challenges so they can grow up safe and healthy. We support individuals with developmental disabilities so they can reach their full potential.

In this report, you will find some of our highlights of the last year, stories of people we have served and goals we have for impacting our society. And none of it would be possible without you.

So to all the donors, volunteers, employees, families and community members, we say "thank you." We hope you will continue to join us as we take on this complex but immensely rewarding work. We are confident that together we can face the challenges and needs of our growing community and build a better future for all Oregonians.



Roger Cooke, JD  
2008-09 Chair, Board of Directors



Christopher J. Krenk, MSW  
President & CEO

# ALBERTINA KERR CREATES POSSIBILITIES

## PROGRAMS

We offer a wide range of intensive psychiatric services for children and support for their families, creating possibilities for a healthy, productive life for each child. Programs include a therapeutic preschool, a crisis psychiatric facility, outpatient services, community-based treatment, a family resource center and foster care. Last year, we provided services to 995 children and their families.

We work with children and adults with developmental disabilities. We have 43 group homes and serve people in their own apartments. We also offer programs that help people with developmental disabilities connect with their community through job and volunteer placements. Last year we served 271 individuals with developmental disabilities.

## LOCATIONS

Our programs are located throughout the Willamette Valley with services primarily offered in Multnomah, Clackamas, Washington, Marion and Lane counties. We also manage foster homes in Clatsop, Columbia, Tillamook, Yamhill, Polk, Lincoln, Benton and Linn counties. However, we serve individuals from all over Oregon and Southwest Washington.

## SUPPORT

We could not do this work without broad community support. Last year 956 volunteers gave 49,653 hours of their time to our events, programs, businesses and committees. We also have more than 800 dedicated staff members and 2,300 financial donors. Albertina Kerr truly is a cooperative effort.

## OUR HISTORY

We began in 1907 as a shelter for homeless men and soon began offering support to families. We ultimately led the way in Oregon's youth and family services and care for those with developmental disabilities.

# FIND THE POTENTIAL YOUTH GROUP HOMES EXPAND AND TEACH INDEPENDENCE

## THIS YEAR:

- ① 15 neighborhood group homes for youth
- ② 103 children between the ages of 9 and 18 served
- ③ 53% of group homes in Oregon for children with developmental disabilities and mental health challenges are operated by Kerr

## YOUTH GROUP HOMES

The children in Albertina Kerr's youth group homes have a developmental disability and mental health challenges. Many have a history of abuse and neglect. In our neighborhood group homes of no more than five children, they are able to establish safe, nurturing and stable home lives.

Through 24-hour care, support and life skills training, we provide them with the tools they need to live as independently as possible when they become adults. These skills include forming positive relationships, handling money, finding a job, taking public transportation, shopping and managing their individual care needs. Learning these skills helps ensure the youth are able to lead self-determined and fulfilling lives.

Judy has a developmental disability and also has the diagnoses of bipolar disorder and schizophrenia. She lived in several different foster homes before she came to one of our group homes when she was 16. Two years later, she graduated from high school, and with the help of staff, secured her own apartment.

"Now I know how to deal with my diagnosis and I can even administer my own medications," said Judy. "I know that if I don't take them, I'll get off track. I appreciate the staff so much for all their help and their hard work."

We saw the potential and ability in Judy. Since 2006, the program has grown from nine homes to 15. We hope to serve more children like Judy and see that they all reach success.



# FIND THE LOVE & SUPPORT FOSTER CARE SERVES MORE CHILDREN IN NEED

## THIS YEAR:

- ① 107 children served
- ② 51 new foster families were recruited, trained and certified
- ③ 80 foster homes received ongoing training and support

## THERAPEUTIC & SPECIAL NEEDS FOSTER CARE

On any given day in Oregon, there are more than 5,000 children in foster care. Kids with the highest needs are often the hardest to place and end up moving from home to home. At Albertina Kerr, we specialize in recruiting and training the highest-quality foster parents to provide stable, loving homes.

In our therapeutic foster care program, we care for children who have experienced physical, emotional and sexual abuse. They experience challenges at school and may lag behind their peers because they have changed schools each time they have moved homes. We also provide care to children who not only have multiple mental health diagnoses, but also have a developmental disability.

Whatever challenges they face, all children need a safe, supportive environment in order to thrive. Children like Barbara, who came to Albertina Kerr at the age of 10. She'd been in numerous foster homes since being abandoned by her parents and had one failed adoption in another state. Barbara was very shy and sad when she came to live with Steve and Karen.

Barbara began to flourish in their rural Oregon home, learning to ride horses, taking dance classes and becoming part of their family. Her Albertina Kerr team worked with her on managing her mental health challenges and bringing her grades up. Today, she lives with Steve and Karen who have become her "forever family."

That's why we continue to grow our foster care program to serve more children like Barbara. Last year we served more than twice as many children as the previous year. We also expanded our services and now operate in 12 counties in the state.



# FIND THE STRENGTH INTENSIVE COMMUNITY-BASED TREATMENT FOR CHILDREN KEEPS FAMILIES TOGETHER

## THIS YEAR:

- 1 103 children served
- 2 66% of the children had decreased incidence of major behavioral problems
- 3 93% of the children continue to live in their biological, adoptive or foster families in the community

## INTENSIVE COMMUNITY-BASED SERVICES

Our goal is for children facing emotional or mental health challenges to be able to remain in their own homes and schools and be connected to their communities. That's why we have worked hard to grow these services over the last two years. The program has more than doubled, from serving 47 children in its first year to more than 100 this year.

The program serves children ages 3 to 17 who are at risk of being kicked out of school or losing their home placement. We start by providing the child and family a team of support. The services include home-based therapy, skills training and a 24-hour helpline. We work one-on-one with the child and integrate the whole family into the plan of care.

We also look for ways the family can draw strength from their community, whether it's a neighbor with children around the same age or a volunteer activity that the family could accomplish together.

Our team is there to build a plan for the success of the child and family. We measure success when the family and community have everything in place to understand and meet the child's needs. As one parent said, "I am now able to understand my child a little better, and I can handle his needs."

In the coming year, we plan to grow the program to serve more of our community's vulnerable children and allow families to stay together.



# FIND THE JOY OF GIVING BACK

Join us as we challenge the norm to create a society that has no barriers. A community where people who face mental health challenges and developmental disabilities are included and empowered. Where families are supported and children have reason to smile. Where everyday people reach out to the most vulnerable and give back to their community. **Here's how you can make a difference with Albertina Kerr:**

## VOLUNTEER

We invite you to share your time and talent by volunteering in a program, in one of our volunteer-run businesses, at a special event or on a committee. From one-day projects to ongoing volunteer roles, everyone can find a way to make a difference.

## ADVOCATE

Your continued support of Albertina Kerr's mission helps us as we advocate for children with mental health or emotional challenges and people with developmental disabilities.

## GIVE

Donations of money, goods and services are always appreciated and used wisely. Since 91 cents of every dollar goes directly into programs, we are able to continue to grow and maintain high-quality services for individuals, children and families in our community.

## WORK FOR KERR

When you join Albertina Kerr as a staff member or professional foster parent, you become part of a team motivated to provide innovative and excellent programs, services and care to support those in need.

# FOUNDATION & ORGANIZATION AUDITED FINANCIAL STATEMENTS

## CONSOLIDATED STATEMENT OF ACTIVITIES

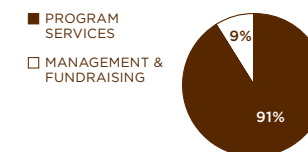
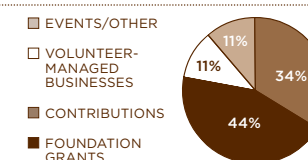
### Oregon's Investment in Kerr

Government & Other Contracts	\$32,935,777
Contributions and Grants	3,155,234
Volunteer-Managed Businesses, Net Sales	399,599
Income & Net Appreciation of Investments	(950,704)
<b>Total Revenue</b>	<b>\$35,539,906</b>

### Kerr's Investment in Oregon

Program Services	\$32,406,231
Management	2,267,129
Fundraising	422,526
Volunteer-Managed Businesses	348,266
<b>Total Expenses</b>	<b>\$35,444,152</b>

### Sources of Private Support



## CONSOLIDATED STATEMENT OF FINANCIAL POSITION

Assets	2009	2008
Cash	\$1,134,861	\$942,106
Contract & Contributions Receivables	5,180,196	4,996,626
Investments	3,088,869	3,465,409
Property & Equipment	8,927,468	8,492,216
Other Assets	717,447	623,623
<b>Total</b>	<b>\$19,048,841</b>	<b>\$18,519,980</b>
Liabilities		
Payables & Accrued Liabilities	\$3,354,441	\$2,879,526
Deferred Revenue	19,874	84,728
Long Term Debt	1,471,128	1,448,082
<b>Total Liabilities</b>	<b>\$4,845,443</b>	<b>\$4,412,336</b>
<b>Net Assets</b>	<b>\$14,203,398</b>	<b>\$14,107,644</b>

# WE ARE GRATEFUL FOR THE PRIVATE SUPPORT THAT IS ESSENTIAL TO OUR SUCCESS

## 11TH ANNUAL RACE FOR THE ROSES

A record-breaking 3,900 racers and 200 volunteers turned out for the race on Sunday, April 5. The 11th annual half marathon/5K raised more than \$200,000 for Kerr.

**Event Chairs:** Tiffany Hambro, Jeremy Hyatt

**Volunteer Committee:** Kara Bekooy, Rivah Feldman, Allison Gourley, Bob Gravely, Terri Kunkel, Stephanie Loughney, Rochelle McIntire, Amanda Meyer, Heidi Nielsen, David Reinhart, Kathryn Underhill, Jason Yamamoto

**Title Sponsor:** Regence BlueCross BlueShield of Oregon

**Presenting Sponsor:** Subaru and Wentworth Subaru City

**Platinum Sponsors:** K-SWISS, Tri-met, Fit Right Northwest Running and Walking Store, Charlie 97.1, 94.7 Alternative Portland

**Gold Sponsors:** AA Sports, Ltd., Beaverton Florists, Bill Newcomer, Boyd Coffee Company, bridgeport brewpub + bakery, Headsweats, LARABAR, Oregon Convention Center, The Standard, vitaminwater10 and smartwater, Willamette Week, Team in Training Oregon Chapter

## SPOTLIGHT ON KERR ANNUAL BENEFIT

More than 200 guests ventured “down the rabbit hole” last May for an evening of dancing, dining, and live and silent auctions at the Mad Hatter’s Ball, raising over \$200,000.

**Event Chairs:** Traci Richardson, Kim Nelson

**Volunteer Committee:** Keren Brown Wilson, Nate Burch, Gwen Butler, Geoffrey Bruce, Colin Cave, Doug Morris, Janice Newmark, Anton Oehlert, Brad Preble, Paul Reddick, Rachel Sherger, Michael Thale, Christina Trolinger, Kay B. Abramowitz

**Platinum Sponsors:** Precision Castparts Corp., Regence BlueCross BlueShield of Oregon, Union Bank

**Gold Sponsors:** CareOregon, Concepts in Community Living & JFR Foundation, Kaiser Permanente, Portland Valve & Fitting Co.

## FOUNDATION GOLF CLASSIC

Volunteers organized this September 18, event at Pumpkin Ridge Golf Club, which raised more than \$50,000 for the Albertina Kerr Centers Foundation endowment.

**Event Chair:** Greg Mottau

**Volunteer Committee:** Jerry Baysinger, Doug Bogen, Danny Nelson, David Manougian, Celia Murphey, Doug Sparks, Jim Trolinger

**Corporate Sponsors:** Comcast SportsNet, Dave Shepard Enterprises, Pacific Continental Bank, Portland Valve & Fitting Co., US Bank

**Presenting Sponsor:** Portland Pearl Rotary

## 102ND ANNUAL MEETING

The Annual Meeting of the Board of Directors and Foundation Trustees attracted over 250 Albertina Kerr supporters at The Governor Hotel on October 28 to learn more about Kerr’s direction for the future and hear new insights about Asperger’s from best-selling author John Elder Robison, reminding all of us that those with developmental differences can lead successful lives.

**Speaker Sponsor:** Portland Children’s Levy

**Silver Circle Award:** Portland Valve and Fitting Employees for their continued support and countless hours they contribute to Kerr’s special events.

**Outstanding Community Support Business Award:** Subaru – NW Region for their sponsorship and involvement with this year’s Race for the Roses.

**Outstanding Community Investment Award:** Washington County Community Development Block Grant for their generosity to Kerr over the past four years, most recently enabling us to purchase a new youth group home.

## THE OLD KERR NURSERY ASSOCIATION

With a total of 536 volunteers last year, members of The Old Kerr Nursery Association gave 41,761 hours of service. Volunteers operate Albertina’s Restaurant and Shops at the Old Kerr Nursery. Once a home for children who were awaiting adoption, this lovely structure is a Portland Landmark and National Historic Site. Since founding in 1981, the businesses have generated significant income and deepened community goodwill for Albertina Kerr.



## CHAMPIONS FOR KERR GIFT SOCIETY

The society was established in 2004 to recognize individuals who have made an annual contribution of \$1,000 or more, and to encourage others to join in their support. More than 125 members contributed \$337,700. The Maybelle Clark Macdonald Fund matched \$1,000 for each new Champion member. And the Fund provided an extra \$1,000 for every board member and foundation trustee if they had 100% participation. The challenge was met.

**Committee Co-chairs:** David Streicher, Christine Brown

**Volunteer Committee:** Dave Andersen, Tony Cracchiolo, Roger Cooke, Christopher Krenk, Merry Meek, Margaret Rowland, Tony Seashore

## KERR MARKETING COMMITTEE

A group of specialized volunteers came together last year to raise the awareness of Albertina Kerr and bring in more supporters. They created a comprehensive marketing plan and oversaw the creation of our first formal marketing campaign. Army of Angels (kerrangels.org) launched this fall. We are grateful for this dedicated group.

**Committee Chair:** David Manougian

**Volunteer Committee:** Lee Amberwood, Peter Bhatia, Joanna Burke, Leigh Milander, Jim Trolinger

## FIND THE PRIDE IN ACCOMPLISHMENT

Albertina Kerr has 28 neighborhood group homes throughout the Willamette Valley for adults with developmental disabilities. Unlike the institutions of another era which cut ties with family and shielded people from the outside world, our homes focus on connecting residents with their community and increasing independence. Everyone is encouraged to set and achieve goals. James, who has cerebral palsy, learned to cook this year and went to the State Fair. He made a trip to visit his sister and spent time in his home’s garden with his roommates. As one of his caregivers says, “He just loves life.”

The following lists represent gifts given July 1, 2008 to June 30, 2009.

## KERR GUARDIAN SOCIETY

Each member of the Guardian Society has made Kerr part of their estate plans or created a life income gift, helping us build a solid foundation for the future.

Anonymous Donors  
Virginia Ammons  
Charles & Norma Beek  
Darlene Benjamin  
Eleanor Boxx  
Lee Carson  
Dion Cole  
Jean Cory  
Patricia L. Cudahy  
Beulah V. Dennis  
Howard & Peggy Dietrich  
Pat & Andy Dignan  
Marcia J. Director  
Kevin & Genevieve Director  
Dorothy Emig  
Gwen Foley  
Edson C. & Jeanne B. Gaylord  
Helen R. Harris  
Barbara Hood Conner  
Gordon Janney  
Mary Alice Jantze  
The Jarman Trust  
Charmaine Jensen  
Alison Jones  
Georgia Koehler  
Chris Krenk & Nell Babcock  
James & Joan Leigh  
Ardath Lilleland  
Jodi Lippert & Timothy L. Barr  
Maybelle Clark Macdonald  
Jerry L. Martin  
Merry M. Meek  
Joan R. Morton  
Greg & Sandra Mottau  
Marjorie E. Mottau  
Renee Nevegold  
Clarice L. Norman  
Frances S. Palk  
Jackie Panner  
Marty & Dick Phillippi  
Robert & Dorothy Poznanski  
Dawn Pratt  
Harry Tarbell  
Peter Thompson & Suzanne Spittler Thompson  
Marta & Kenneth Thrasher  
James & Christina Trolinger  
William & Lila Ulrich  
Caroline J. Wann  
B. Joanne Weaver  
Muriel Woolley

## ORGANIZATIONAL DONORS

\*Represents Gift Total for Multi-Year Commitment

### Gifts \$300,000+

Paul G. Allen Family Foundation  
Maybelle Clark Macdonald Fund\*  
Meyer Memorial Trust\*  
Portland Children's Levy\*  
The Robert Wood Johnson Foundation\*  
Washington County Community Development Block Grant

### Gifts \$100,000 - 299,999

Multnomah County - Department of Community Justice  
The Oregon Community Foundation

### Gifts \$20,000 - 99,999

Entercom Portland  
JFR Foundation  
Kaiser Permanente  
Mt. Hood Cable Regulatory Commission  
Multnomah County - Department of County Human Services  
Multnomah Education Service District  
Oregon Department of Human Services - Child Welfare  
Oregon Youth Authority  
Regence BlueCross BlueShield of Oregon  
Regence Fund of the OCF  
Subaru Northwest Region & Wentworth Subaru City  
Charlie Swindells Fund of the OCF  
Wentworth Subaru

### Gifts \$10,000-19,999

Bank of America Charitable Foundation, Inc.  
CareOregon  
Fit Right Northwest Running and Walking Store  
Free Geek  
Henry Lea Hillman, Jr. Foundation  
K-Swiss  
Marie Lamfrom Charitable Foundation  
Margaret Thiele Petti Foundation  
Portland Valve & Fitting Co.  
Precision Castparts Corp. Tri-met  
Union Bank  
U.S. Bank/U.S. Bancorp Foundation

### Gifts \$5,000 - 9,999

AA Sports, Ltd.  
Andersen Construction  
Archery Summit  
Braemar Charitable Trust  
Cal Weld  
Comcast  
Concepts in Community Living & JFR Foundation  
Fulfillment Corporation of America  
Hoover Family Foundation Oregon  
Juan Young Trust  
Kiewit Pacific Co.- Northwest & Pacific Structures Districts  
OCF Joseph E. Weston Public Foundation  
Oregon Convention Center  
Portland General Electric Foundation  
The Standard  
The TJX Foundation  
Rose E. Tucker Charitable Trust  
UPS Foundation  
UPS Supply Chain Solutions  
Wheeler Foundation  
Willamette Week

### Gifts \$2,500 - 4,999

ACME Business Consulting, LLC  
Amica  
Ater Wynne LLP  
Bank of America  
Beaverton Florists  
Boyd Coffee Company  
bridgeport brewpub + bakery  
Broadmoor Women's Club  
Coastal Training Technologies Corp.  
Combined Federal Campaign  
Dave Shepard Enterprises Inc.  
FlexStaff  
Garvey Schubert Barer  
Gary McGee & Co.  
Headswats  
Holzman Foundation, Inc.  
Home Depot, Inc. - N Salem  
Integra Telecom, Inc.  
International Union of Operating Engineers Local 701  
Howard Wallis Irwin & Dorise Carlyon Hinton Irwin Foundation  
Jackson Foundation  
Arthur M. James Family Foundation  
Juan Young Fund VII of the OCF  
LARABAR  
Leupold & Stevens Foundation  
Northwest Children's Theater & School  
Northwest Health Foundation  
Pacific Continental Bank  
Perkins & Company, P.C.  
Peter's Office Supply Company  
Portland Trail Blazers  
Providence Health & Services - Oregon Region  
Qwest Foundation  
Riverbend Youth Center

Sorenson Photography  
State Farm Insurance  
Stoel Rives LLP  
Target  
Team in Training Oregon Chapter  
US Bancorp Equipment & Financing  
vitaminwater10 & smartwater

### Gifts \$1,500 - 2,499

Alaska Airlines  
Beaverton Bakery  
Besaw's  
Bradshaw Advertising  
The Robert Brady Charitable Trust  
Food Services of America Inc.  
June & Julian Foss Foundation  
Foster Family Care Network  
Howard S. Wright Constructors  
IBEW & United Workers Federal Credit Union  
NIKE Employee Matching Gift Program  
Northeast Community Center  
Portland Pearl Rotary  
Portland State University  
Project Enterprise  
The Salvation Army of Washington County  
Sunshine Dairy Foods  
United Salad  
The Wellstone Group, LLC  
Wilf's Restaurant

### Gifts \$1,000 - 1,499

Ashforth Pacific, Inc.  
Ater Family Fund of the OCF  
Avnet Contributions Council  
Beaverton High School  
The Frank & Margaret Bitar Foundation  
Black Helterline LLP  
Consumer Cellular  
Happy Valley Extended Day  
Dan & Irene Hunter Fund at The Seattle Foundation  
Huron Consulting Services, LLC  
Jensen Investment Management  
Jivanjee Architect  
Justa Pasta  
Katayama Framing  
Merta J. Mason Fund of the OCF  
Mercer Health & Benefits Mortgage Trust, Inc.  
Nike, Inc.  
Omega Audio  
Oregon International Air Show  
Portland General Electric  
Prudential Foundation  
Matching Gifts Program  
The Robert D. & Marcia H. Randall Charitable Trust  
Saks Fifth Avenue  
SMART  
Sunrise Bagels & More, Inc.  
Sunrivers Retreat at QuailRest  
Tagmyer Family Fund of the OCF

## CHAMPIONS FOR KERR GIFT SOCIETY

Comprised of our closest donors who contribute \$1,000 or more annually, this essential private support powers Kerr's programs that make a difference.

### Founders \$5,000 +

Yvonne Arthur  
Harold C. Babcock  
Gene & Barbara Bradshaw  
Roger Cooke & Joan Cirillo  
Anthony & Terri Cracchiolo  
Dr. & Mrs. John English M.D.  
Alan & Sharon Folkman  
David & Phi Ford  
Edson C. & Jeanne B. Gaylord  
Estate of Harriet Grant  
Yoshiaki Hasebe  
Curtis & Mary Alice Jantze  
Ross Lienhart & Sheila Edwards-Lienhart  
David & Lori Manougian  
J. Bart McMullan, Jr., M.D. & Patricia Dunahugh  
Joan R. Morton  
Jim & Christina Trolinger  
Keren Brown Wilson & Michael Deshane

### Benefactors \$2,500 +

Kay & Roy Abramowitz  
Larry & Gayle Cable  
Colin Cave, MD  
Lance & Cristi Dayton  
Richard & Maggie Drake  
Ronald & Katie Graybeal  
Chris Herman  
Irwin & Renee Holzman  
Wendy Hunter & Brian Kulhanjian  
Sandra & Arthur James  
Elsie Jones  
Helen M. Kelly  
Chris Krenk & Nell Babcock  
Ron Manougian & Adele Nofield  
Merry M. Meek  
Keith & Debi Meyers  
Greg & Sandra Mottau  
Celia & Jerry Mupphey  
Bill & Debbie Newcomer  
Heidi Nielsen & David Combe  
Don Rutherford  
Anthony & Kim Seashore  
Jerry & Terri Thale  
Ken & Marta Thrasher  
Connie West  
Jack & Ginny Wilborn

### President's Circle \$1,500 +

Ted & Kathi Austin  
Kelly Ballas  
Fritz & Lynn Bartsch

Jerry & Donna Baysinger  
Peter Bhatia & Liz Dahl  
John & Diane Bramsman  
Geoffrey Bruce & Susan Parke  
Jean Cory  
Andy & Patrick Dignan  
Larry & Joan Ellis  
Bertha Guptill  
Mike & Rochelle Hart  
Timothy Kalberg  
Joyce & Kevin Kerstiens  
Lancaster Family  
William C. & Jani E. McCormick  
Robert & Robin Mesher  
Kim & Danny Nelson  
Verne & Jean Newcomb  
Anton & Angie Oehlert  
Susan Parke  
David Reinhart  
Margaret Rowland, MD & Art LaFrance  
Marty Russell  
Rian Rutherford & Mitzi Hansen Thall  
Steve Rutherford  
David Streicher & Gretchen Downey  
Betty E. Streimer  
Peter Thompson & Suzanne Spittler Thompson  
Mark Waller & Gail Hart  
Carol White-Butler & Mac Butler  
Kingsley & Kelly Wick

### Champion \$1,000 +

Christopher & Heather Adamek  
Thelma J. & Merrill M. Adkisson  
Dave & Glenda Andersen  
Jonathan & Deanne Ater  
Don & Jo Barney  
Shelley & Gary Barnes  
Doug & Terri Bogen  
Marjorie Bondurant  
Ben Bradshaw  
Gina & Karl Brimner  
Christine & Lawrence Brown  
Marsha & Richard Buono  
Bruce & Jan Burmeister  
Lee Carson  
Jerome Casey  
Don & Patricia Cassidy in memory of Amelia Puustinen Bristow  
Julia Cooke  
Larry Davis  
Ed & Carole Dayoob  
Bruce & Eileen Drake  
Jeanne & Brian Farr  
Ron & Annie Foster  
Breon Gardner  
Flora Geiger  
Sarah Hale  
Ruby Hall  
Sharon Higgins, MD  
Jerry & Sharyn Hoffert  
Joseph & Rosanne Hoffman  
Barbara Hood Conner  
Edward & Teresa Hostmann  
Robert Kenney  
Jean Kircher  
Ken & Dean Kirn

Georgia A. Koehler  
Priscilla Lewis  
Janice Newmark  
Jodi Lippert & Timothy L. Barr  
Peyton Llewellyn  
Joan Loomis  
Sal & Laura Maglietta  
Jerry L. Martin  
Linda & David McCammon  
Greg & Diane Morgan  
Douglas Morris & Miranda Carney-Morris  
Lisa Mortensen  
Ron & Judy Mundt  
Dave & Ruth Murray  
Steven Naito  
Paul & Lisa Nourigat  
Wally & Dawn Pfeiffer  
Chip & Christianna Pierce  
Traci & Bob Richardson  
Gary & Leslie Reddick  
Joan L. Samsel  
Ruby M. Short  
Katherine Skurski  
Susan J. & Duane D. Stanley  
Vic & Chris Stibolt  
Loren J. Stolin  
Dan Striplin  
June & William Tagmyer  
Joseph & Sarah Tennant  
William & Lila Ulrich  
B. Joanne Weaver  
David & Karole Wilson  
David Zier

## INDIVIDUAL, CORPORATE & FOUNDATION DONORS

### Sponsor \$500 +

Richard & Liz Allen  
Aloha Chiropractic Center, Inc.  
Annuncio Agency  
Anonymous  
Associated Business Systems, A Ricoh Company  
Becton Dickinson & Company  
Charles & Norma Beek  
Vera Bennett  
Bob's Red Mill  
Chris & Tina Bradshaw  
Jered Breedem  
Kay S. Bristow  
Cindi Brown  
Gavin & Candi Brown  
Gwen Burns  
Gwen Butler  
Cambridge Integrated Services Group, Inc.  
David & Bonnie Canary  
Suzanne & Charles Carlbom  
City of Portland Office of Transportation  
Martin & Barbara Cloe  
Construction & General Laborer's Union Local No. 320  
James K. Conway  
CRESA Partners - Portland  
Richard Dark  
Jason Effmann  
eROI, Inc.  
Fidelity Charitable Gift Fund

Deanne Foster  
Craig T. Fox  
Roseann Freitag  
Paul Frisch  
Lois Gibson  
Veryl G. Gibson  
Daniel Gilden & Alison Fulmer  
Jeffrey Gladheim  
Virginia L. Grubb  
F. Michael Heffernan  
Home Depot, Inc. - E Portland Mall  
Andrew & Beverly Honzel  
Horizon Air  
Intel Foundation  
Island Sailing  
Anne Jackson  
Peter & Jan Jacobsen  
JPMorgan Chase & Co. Matching Gift & Volunteer Grant Programs  
Terri Kunkel  
Dan & Reba Kuske  
L & L Exhibition Management  
Liberty Mutual  
Peter & Hope Lizotte  
Donald Lombard  
Betty Lovett  
Dan Striplin  
David & Constance Manning  
Mark McCarthy  
Tracy Meese  
Jude Nicoletti  
Steven & Colleen Olson  
Oregon & Southern Idaho District Council of Laborers  
The Oregon Golf Club  
Oregon State University Intercollegiate Athletics  
Partners on Demand  
Stella Persichetti  
Wally & Dawn Pfeiffer  
Portland Airpark  
Portland Beavers & Portland Timbers  
Prudential Northwest  
R W Beyer Enterprises  
Race Center Northwest  
Carolyn & David Rankin  
Karen Rasmussen  
Brandi Rice  
Delbert & Debbie Riehl  
Elaine Rinde Nelson & William Nelson  
Barbara Robbins  
Tommy Rudge  
Craig & Liz Rusch  
Dennis & Kristen Seibert  
James Senders  
John & Daphne Settle  
Richard & Linda Siegert  
Joan Suckow  
Sysco Corporation  
Terry Hines & Associates  
UBS Financial Services  
Kathryn Underhill & Jeff Modun  
University Of Oregon  
Uptown Hardware  
Dave & Marion Uyemura  
Daniel & Makiko Villeneuve  
Marc Walters  
Karin Wandtke  
Allan Weiland, MD & Karen Weiland  
Craig Westling  
William C. Woods  
Jason Yamamoto & Mariel Combs, JD



Photo: LeeAnn Gauthier

### Patron \$100 +

Ronald & Elaine Aase  
 ACT Theatre  
 Bruce & Susan Adams  
 Janice Adams  
 Albertina's Restaurant  
 Dining Crew  
 Carilyn & Richard Alexander  
 Carole Alexander  
 Nicolas & Pauline Alexander  
 Barbara Allen  
 Betty A. Allen  
 Allied Advertising  
 Aloha Rebekah Lodge No. 253  
 Marie Amacher  
 Gayle & Bob Aman  
 American Medical Response  
 Virginia L. Ammons  
 Darrel & Lori Anderson  
 Earl H. & Jeanette L. Anderson  
 Steve Anderson  
 Rachel & Bruce Aschim  
 Atiyeh Brothers  
 Victor & Dolores Atiyeh  
 Nelson & Susan Atkin  
 Ray & Jean Auel  
 Marian J. Avena  
 Lynn Baccus  
 George & JoAnn Baker  
 Joann Baker  
 Travis Baker  
 Lee Ball  
 Gretchen Barber  
 Mrs. Graham Barbey  
 Linda & Virgie Barnett  
 Barran Liebman LLP  
 Sam Bars  
 Sacha Basho  
 Laurie & Roger Becker  
 Darlene Benjamin  
 Deborah Bergendahl  
 B. Clay & Erica Biberdorf  
 Nancy Birch  
 Marion & Hobart Bird  
 BJ's Coffee Co.  
 Owen & Lynn Blank  
 Stan & Judy Blauer  
 Richard Blicke  
 Gail Blomquist  
 Joanna Boardman  
 Sharon Brabenac  
 Bradley Angle House  
 Jean & Kenneth Bradley  
 Chip & Amy Bradshaw  
 Nancy Bradshaw  
 Carol & Jim Brandt  
 Chelyn Briand  
 Bricklayers & Allied  
 Craftworkers Local 1, Oregon  
 Marni Brinkley  
 Barbara & Jim Brisbois  
 Donal Brislain  
 Paul & Debra Brodie  
 Leanne Brown  
 P.J. & Iris Brunengo  
 Lauri & Roderic Brunetto  
 Buckhead Beef Company  
 Joanna Burke  
 Virginia Burns  
 Terri Burton  
 James & Lorraine Bushek  
 Ronald Butler  
 C & G Wines  
 Cafe Nell  
 Earl Cahoe  
 Donna Campbell

A. D. & Catalina Capellan  
 Joanne O. Carrato  
 Tom & Linda Carson  
 Cascade Wholesale Hardware  
 The Cellar Door  
 John & Lou Chapman  
 Nancy Cheney  
 Mark & Kim Childs  
 Edith & Joseph Cholick  
 Craig Christenson  
 ClearPoint LP  
 Cecilia & Cameron Clitheroe  
 Mr. & Mrs. Allen Cohen  
 Barbara Coit Yeager  
 Judith J. Coiteux  
 Maribeth Collins  
 James & Elizabeth Combs  
 Marjorie Conroy  
 Cookies by Design  
 William & Kristen Cory  
 Douglas & Sarah Crabtree  
 Robert Crabtree  
 Lorraine Creek  
 Gail Cronyn  
 John & Margaret Crowell  
 Patricia L. Cudahy  
 Custom Stamping &  
 Manufacturing Co.  
 Daily Grill  
 Chris & Nancy Dalengas  
 Becky & Stephen D'Ambrosia  
 Barbara Daniels  
 Michael Darcy  
 Daughters of Penelope  
 Daughters of the British Empire  
 Martin Davis  
 Deacon Charitable Foundation  
 Brian & Elizabeth DeBrie  
 Sue DeMarco  
 Selma R. Denecke  
 James & Rita Deweese  
 Lori Dieringer  
 Virginia Dockrell  
 Michael Dollarhide  
 Sandy & Jim Donahue  
 Doubletree Hotel - Downtown  
 Neil Douthat  
 Darrell Dover  
 Harry & Kathleen Dozier  
 Manus Duffy  
 E & R Wine Shop, Inc.  
 Amy Edwards & Geoff  
 Stuckart  
 Eliza & Glenn Eisen  
 El Gaucho  
 Laurie Elwell  
 Dorothy Emig  
 Dorothy & Marcel Empey  
 Erik & Judith Eselius  
 Eugene Ballet Company  
 Evan Pilchik Photography  
 F. H. Steinbart Company  
 Dede Farrell  
 Kevin Farrow  
 Norma Faulkner  
 Brent Fawcett  
 Lorreen Fedje  
 Edward Feldhausen  
 Jane & Edward Fennell  
 Fenouil  
 Sue Ferris  
 Elsie Fields  
 Paulette & Larry Filz  
 Eric & Sandra Finchem  
 Maureen & Mike Fisher  
 Nancy Fishman  
 Sharyn Flanigan

William Fleet  
 Mrs. Robert Flowerree  
 Flowerree Foundation  
 Flowers by Dorcas, Inc.  
 Millard & Donna Forell  
 Mary & Lowell Forman  
 Carol & Paul Fortino  
 Todd Foster  
 Milton Fox  
 Matthew Franklin  
 Fraternal Order of Eagles -  
 East Portland Aerie 3256  
 Margaret & Roger Frederick  
 Doris Frie  
 Janice Friedli  
 Jack Friedman & Susan Climo  
 Marilyn Frost  
 Larry & Kristin Futter  
 Cookies by Design  
 Ada Gange  
 Annie Gannon & Matt McCoy  
 GAP Foundation  
 Doris Gardiner  
 Carolyn & Tom Gavin  
 Larry & Mary Gayton  
 E. Lois & Robert Gebhart  
 Geffen Meshier & Co.  
 Patricia Gentry & Leo Gentry II  
 Carol Gerhold  
 Arthur & Patricia Gerlach  
 Marylynne Gilley  
 Mark & Jennifer Gilroy  
 Bob Goldberg & Phyllis Smith  
 Robert & Roje Gootee  
 Susan & Jeff Grayson  
 Brittnee Gregory  
 Grieg Lodge 15 Ladies Social  
 Club  
 Deborah Griffith  
 John & Pat Griffith  
 David Grindy  
 Ellen Gyllstrom  
 MaryAnn & Bill Haines  
 Vivian Hall  
 Michelle Hallbrook  
 William & Linda Hammersley  
 Irene Harms  
 Janet & Thomas Harney  
 Claudia Harris  
 Arley & Mira Hartley  
 Josephine Hatfield  
 Helen Hazen Loewen &  
 John Loewen  
 Thomas & Nancy Heckler  
 Bob & Francy Heffernan  
 Heffernan Insurance Brokers  
 Gary & Beverly Heitz  
 Greg & Tina Held  
 Josh Herndon  
 Zilda Heusinkveld  
 Nancy Holden  
 Horseless Carriage Club of  
 America, Portland  
 Regional Group  
 Susan Howard  
 HP Company Foundation  
 Joel & Debra Huffman  
 Elizabeth Hulbert  
 Angela & Nathan Hult  
 Cecelia Huntington  
 William C. Hutchins  
 Jeremy Hyatt  
 Inn at Cape Kiwanda  
 Intiman Theatre  
 Aresh Irajpanah  
 Elisabeth &  
 Jean Pierre Jacqmotte

Meg & Stephen James  
 Anna Jamison  
 Janet Wainwright Public  
 Relations, Inc.  
 Julie Jelline  
 Kirk & Judith Johansen  
 Joan Johnson  
 Sarena Johnson  
 Marie Jones  
 David Kamens  
 Andrea Karlin  
 Barbara Keller  
 Gregory Keller & Elizabeth  
 Hatfield-Keller, M.D.  
 Cristina & Pat Kelley  
 Kells Irish Restaurant & Pub  
 Marianne Kempter  
 Helen Kennedy  
 Peggy Kernan  
 Susan & Harold Kerns  
 Andrew & Marjorie Kerr  
 Kincaid's  
 Pamela Kingsbury  
 Miriam & August Kiso  
 Marguerite E. Kleger  
 Allison Knuth  
 Joseph Koutney & Tom Masic  
 Jeanne Kramer  
 Marvin & Mary Krenk  
 Irene & Knute Kroner  
 Deborah & Robert Kross  
 Stephen R. Krug  
 Cathryn Kurtz &  
 Robert McMahon  
 Arnold Labby, PhD &  
 Eva Labby  
 Laborers' International Union  
 of North America Local  
 No. 296  
 Laborers' Union Local No. 121  
 Tammy Lash  
 Gladys & Anton Latham  
 Mark Lee  
 Tim Lehman  
 Jim & Joan Leigh  
 Harriet Leshner  
 Craig & Jill Lewis  
 Esther Lewis  
 Gale Lewis  
 Ken & Jan Lewis  
 Rex & Kathryn Lindaman  
 Helen Lindgren  
 Udo & Julie Lindikoff  
 Douglas & Theresa Lovett  
 Penny & Jim Luening  
 Gary & Patti Lukas  
 Laurie & Robert Lusk  
 Sue Lydic  
 Betsy & James MacKay  
 Heather MacPherson  
 Tracy Madsen  
 Jane Manchee & Joe Paul  
 Lois Manley  
 Karen Manning  
 Market Strategies  
 International  
 Amy & Chris Marks  
 John Martin  
 Michael & Barbara Masterson  
 Barbara & Bill Mathey  
 Tim & Julie Mauer  
 Norma J. McAfee  
 Todd McConachie  
 Marilyn McDonald &  
 Wilford Weeks  
 Dave & Kim McElwee  
 David McFarlane

Barry & Denise McIlvain  
 Rochelle & J.D. McIntire  
 Carolyn Anne McKibben  
 J.P. McLaughlin  
 Edna McLean  
 Jack & Carolyn McMurchie  
 Linda McNulty &  
 Matthew Simpson  
 Debbie Meeuwssen  
 Dorothy Mejdell  
 Ruben & Elizabeth Menashe  
 Victor & Toinette Menashe  
 Miller Paint Co.  
 Sandra Millius & Jeff  
 Motsinger  
 D. W. & Jane Mills  
 Mitchell, Lang & Smith  
 Milton & Phyllis Mittelstedt  
 Mobil Retiree Matching Gifts  
 Program  
 Jason & Angela Mocca  
 Regina Mockmore  
 Daniel E. Montag &  
 Kathryn M. Martinson  
 Kwon Il Moon  
 Kenneth Morgan  
 Adele Morley  
 Melinda Morris  
 Marilyn Morrison  
 William Morton  
 Marjorie Mottau  
 Norman Muilenburg  
 Mary Lou Munroe  
 Nature Cures Clinic, LLC  
 Pearl & Robert Neal  
 Jane Ellen Nelson  
 Teresa Nelson  
 Vanessa Nelson & Jake Becker  
 Newmans At 988  
 Newport Seafood Grill  
 Patricia Nichols  
 Jeff Nielson  
 Jeanine & George Nordling  
 Peter & Suzie Norman  
 Art & Amy North  
 Theodore Norton  
 Noventus Solutions  
 Jill Odell  
 Oklahoma City Thunder  
 Richard Olazaba  
 Old Pass Church Youth Group  
 Michael & Gloria Olin  
 Dr. Donald Olson  
 OMSI  
 Lynn O'Neal Jr. & Nancy  
 O'Neal  
 Roy & Mary Beth Onstot  
 Oregon Shakespeare Festival  
 Oregon Sports Authority  
 Foundation  
 Our Children's Store  
 James Pace  
 Pacific Machinery and Tool  
 Steel Co.  
 Andrew & Wendy Palau  
 Betty Palmer  
 Daniel & Maylene Park  
 Brad Parker  
 Gary & Bette Parks  
 Judy Parks  
 Kelsey Parks  
 Janice & Billy Parrish  
 Jennifer Patrick  
 Carl Pearson  
 Steven Peck  
 Deborah Peery  
 Pelican Pub & Brewery

Peter Corvallis Productions  
 James & Terrie Piro  
 Jerry Piro  
 Jenna Pisciotto  
 Pamela Pittman  
 John W. S. Platt  
 Janet Plog  
 Dorothy Polizzi  
 Susan Pommier  
 Matthew Porter  
 Portland Children's Museum  
 Portland Contractors Supply  
 Portland Marathon  
 Portland Opera  
 Portland Picks  
 Portland Spirit  
 Mrs. Elizabeth Price  
 Verneta & Ronald Price  
 Rose Prihar  
 Prime Time Sports  
 Providence Festival of Trees  
 Patricia A. Purcell  
 Daniel E. Montag &  
 Kathryn M. Martinson  
 Donna Pyne  
 Mary Lou Raffety  
 Vittz & Elaine Ramsdell  
 Nancy & Steve Randleman  
 Jim Ray  
 Kathleen Reed  
 Kathryn Rees-Turyn  
 Judith Rice  
 Richard Rickel  
 Kathleen & Dave Ris  
 RiverPlace, a Larkspur Hotel  
 Harley Roberts  
 Nancy & Don Robinson  
 The Rose Quarter  
 Ron Rose  
 Dan Rosen  
 Mike Royce  
 Sharon & Jerzy Rub  
 Alan & Anita Ruderman  
 Fern Russak & Sean Schafer  
 Barry & Penny Russman  
 Carolyn & Henry Sakamoto  
 Dan Saltzman  
 Allen Sandstrom  
 Howard & Geraldine Sargent  
 Cordelia Saylor  
 Jim & Beth Schaller  
 Cheryl Schenck  
 The Scouler Foundation  
 Greg Sellers  
 Clayton Shaber  
 Kristin & Michael Shadley  
 Joyvonne Shaw  
 John & Joan Shipley  
 Margaret Shoemaker  
 David & Penny Short  
 Shute Park Aquatic &  
 Recreation Center  
 Kathryn Sigler  
 Norm & Norma Silver  
 Betty & Forrest Simmons  
 Simpatica Catering &  
 Dining Hall  
 Ruth Simpson  
 Julia & Michael Sims  
 Kathleen Sinclair  
 Rachel & Fred Siri  
 James Sisk, MD & Annette Sisk  
 Skamania Lodge  
 James Smejkal  
 Donald & Nancy Smith  
 Hobart & Shirley Smith  
 L. Chapitel Smith  
 Ann Snow

## FIND THE OPPORTUNITY TO SUCCEED

Kerr Bikes opened on the Portland waterfront this spring with a fleet of bike rentals, including surreys and tandems. But the new venture provides more than just a good time. Kerr Bikes is an employment program for people with developmental disabilities, like Matt who delivers brochures to area hotels and Louis who helps customers choose bikes. All the jobs offer meaningful ways to get involved in the community. Our vision is for all people with developmental disabilities to reach their own potential through increased independence, productivity and community involvement. Kerr Bikes is a unique opportunity to do just that.

Pat Soles  
Cate & Jeff Soulagés  
Southpark Seafood Grill & Wine Bar  
Denise & Kip Steele  
Sterling Savings Bank  
Arduus Stevens  
Deanna & William Stevenson  
Eloise & Rees Stevenson  
Robert Streicher  
Mark Stromme  
Joel Sturm  
Sunnyside Seventh Day Adventist Church  
Walt & Dianne Swan  
LaRhetta Swann  
Ernest & Marianne Swanson  
Cheri Swoboda  
Anne Taggard  
Vicki Taglificio  
John & Ruth Talbott  
Rod Tallman  
Melvin Taylor  
Virginia Taylor  
Clifford & Karen Theis  
Craig M. Thompson  
Donald & Barbara Thompson  
Keith & Julie Thomson  
Faye Till  
Jay Tinker  
Simon Tomkinson  
Traffic Safety Supply Co., Inc.  
Margaret Trapp  
Vigo Troy  
Saundra Tucker & Kevin Bacon  
Joan Turner  
Unico Properties  
Ann & Richard Uphoff  
Vacation Villages of America Inc.  
Jeff Valentine  
Jean Veach  
Veritable Quandary  
Paul Vestigo Vino Paradiso  
Volunteers of America  
Theresa & Robert Volz  
Edward & Mary Vranizan  
Don & Eunice Waggoner  
Charlotte Wagner  
George & Janice Wallace  
Kiyomi Wallace  
Caroline J. Wann  
John D. & Irene Watson  
Tiina Weatherill  
Helen F. Weber  
Tiffany Webster  
Richard L. Weil  
Jay Weiser  
Johnna Wells  
Nicholas & Manuela Whelan  
Jill & Ronald White  
Barbara Whiteley  
Jeffrey & Deborah Wihtol  
Willamette Valley Vineyards  
Willamette Writers - Books for Kids  
Bob & Barbara Williams  
Lois Williamson  
WinCo Foods  
Steven L. & Mary Lynn Wintermantel  
The Zandra L. Winters Trust  
Betty & Thomas Wolf  
Dee & Lynn Wolfe  
Elizabeth Woodcock  
Barbara Wright  
Judge Merri Souther Wyatt

Barbara & Charles Yarbrough  
Kathlene & Theodore York  
Barbara & Cary Young  
Anna M. Youngren  
Lior Zadok  
Mary C. Zehring  
Alexandra Zell  
Cathi & David Zerba  
Diane Zidell  
ZRT Laboratory, LLC

### Gifts in Appreciation

Lorraine Allen  
Virginia Ammons

Lisa McNabb  
Harriet Jones  
Merry Meek  
Gary & Lynne Hartshorn  
James & Christina Trolinger  
James Pace

### Gifts in Honor

Diane Alexander's 70th Birthday - *Anonymous*  
Betty Allen's 90th Birthday  
*Bruce & Carol Allen, Helen Carter, Margot B. Dewart, John & Pat Griffith, Robert Kenney, William & Roberta Vrooman*  
Rick & Liz Allen  
*F. Michael Heffernan*

Gary & Shelley Barnes  
*Fern Russak & Sean Schafer*  
The Marriage of Ellen Berg & Dennis Batchelor  
*Marilyn Stapleton*

Alexis Blank  
*Owen & Lynn Blank*

Tarri Butler  
*Anonymous*

Mr. & Mrs. Edwin Cohen's 50th Anniversary - *Barbara Durkheimer & Gary Larsen*

Damien Cole  
*David & Constance Manning*

Laura Crabtree  
*Douglas & Sarah Crabtree, Robert Crabtree*

Judy DeLano  
*Linda Sloan Bronson & James Bronson*

Andy Dignan  
*Don & Joan Strand, Mary C. Zehring*

Mr. & Mrs. Terry Doern  
*Carol & William Reeve*

Thomas & Roberta Dunham's 60th Wedding Anniversary  
*Thomas & Salena Johnson*

Holly Eberhard's 44th Birthday  
*Robert & Kathleen Eberhard*

Marilyn Frost's 75th Birthday  
*Rosalie Betschart*

Sarah Galaher  
*Astrid Adams*

Bertha Guptill's Birthday  
*Betty Allen*

Lynn & Mickey Marks 50th Anniversary - *Barbara Durkheimer & Gary Larsen*

Teri Marr - *Mary Marr*

Christmas Gift in Honor of Kevin & Michael McElwee  
Families - *Loeta McElwee*

Edna McLean - *Sally Jo Farnes*

Grandma Midge - *Anonymous*

Kathleen Rozee  
*Patricia Rozee*

Diane Saban  
*Linda Sloan Bronson & James Bronson*

Jim Spring's 70th Birthday  
*Patrick & Andy Dignan*

Betty Sweeney  
*Donald & Caron Rowland*

Jack & Jane Thompson  
*Craig Thompson*

Jim Trolinger, Portland Valve & Fitting  
*Neil Douthat, Fidelity Charitable Gift Fund, Col. Michael Simon*

University of Oregon Strategic Communications Professionals  
Master Class of 2009 - *Samantha Meese*

Irma Wauchope - *Norine Reres*

Marilyn & Robert Weber  
*Steven Weber*

Joseph Weikel  
*Kathleen & Dave Ris*

Wendy Weil - *Ann Snow*

Wheeler Group Home Staff  
*Anonymous*

Linda Wright  
*Sharon Brabenac*

Mary C. Zehring's Birthday  
*Patrick & Andy Dignan*

### Gifts in Memory

Elizabeth Allen  
*Harley Roberts*

Jane Allison  
*David & Carol Baker, Helen H. Lindgren, Murlene Madison, Mutual of Enumclaw Insurance Company, Gretchen Ootkin, Anne Pagenstecher, United Way of the Columbia-Willamette, David Zier*

Andy Andersen  
*Kenneth & Marta Thrasher*

Geraldine Ardiss  
*Marlene Acre*

Mary Alice Atiyeh  
*Richard A. Atiyeh*

Robert Backstrom, MD  
*Nancy Bennett, Janice Friedli, Karen & Barry Goldberg, Lois Holeman, Merry Meek, Gretchen Skalbeck*

James K. Belknap  
*Mary C. Zehring*

Diane Bennett - *Merry Meek*

Billie - *M. J. Gems*

Stan Blinco  
*Shirley & Jim Blackford, Geraldine R. Cook, Carol & Jack Densem, Robert & Rosemary Emmerich, Doris Frie, Dr. & Mrs. Richard M. Hanson, Horseless Carriage Club of America, Portland Regional Group, Jerome & Geraldine Hubert, Joyce Jacobs, Marlene Johnsen, David & Constance Manning, Phyllis & Larry McIntyre, Pearl & Robert Neal, Elaine Rinde Nelson & William Nelson, Jim & Val Schoffstoll, Jane & Bill Scott, Hobart & Shirley Smith, Barbara & Scott Sparks, James & Shirley Strutt, Steven & Peggy Weber, Mary C. Zehring*

James K. Belknap  
*Mary C. Zehring*

Diane Bennett - *Merry Meek*

Billie - *M. J. Gems*

Stan Blinco  
*Shirley & Jim Blackford, Geraldine R. Cook, Carol & Jack Densem, Robert & Rosemary Emmerich, Doris Frie, Dr. & Mrs. Richard M. Hanson, Horseless Carriage Club of America, Portland Regional Group, Jerome & Geraldine Hubert, Joyce Jacobs, Marlene Johnsen, David & Constance Manning, Phyllis & Larry McIntyre, Pearl & Robert Neal, Elaine Rinde Nelson & William Nelson, Jim & Val Schoffstoll, Jane & Bill Scott, Hobart & Shirley Smith, Barbara & Scott Sparks, James & Shirley Strutt, Steven & Peggy Weber, Mary C. Zehring*

Marjorie Bondurant  
*Virginia Ammons, Charlotte Close, Eliza & Glenn Eisen, Marilyn Frost, Walter & Jean Meihoff, Dr. Donald Olson, Anne Olson, Georgie Packwood, Donald & Barbara Thompson*

Richard Brady  
*Joyce Jacobs*

Donn Bromley  
*Revenue Bureau Employee Fund*

Earl Bumgarner  
*Evelyn Bumgarner*

Clare Whalen Casey  
*Jerome Casey*

Carol Clay  
*Amfor Electronics*

Janet Balmer  
*Cherry Park Study Group, Ethel Davis, Jere DuBois, Mark & Jennifer Gilroy, Irene & Knute Kroner, Susan & Jack Lane, James & Carol Leineweber, Jude Nicoletti*

Yvonne Clemenhagen  
*Anne & Robert Yoshitomi*

Bertrand J. Close  
*Donald Lombard*

Ardeith Colliver  
*Patricia & Brian Taylor*

Suzanne Combs  
*James & Elizabeth Combs*

Nancy DeWard  
*Doug & Donna DeWard*

Don Ebert  
*Nancy & John Moore*

Glenn Everton  
*Glenn Everton, Virginia Everton, Virginia L. Grubb, Joyce Jacobs, David & Constance Manning, Marilyn Morrison*

Lyle Fleener  
*Marie Haaga, Joan Turner*

Barbara Fuqua  
*Henry Fuqua*

Monte & Peggy Greer  
*Susan Greer*

Leonard Hall - *Ruby Hall*

Alice Heyl  
*Marie Amacher, Cafe Marzocca Shirley Kane, Gayle Kauffman & John Frewing, Allison Knuth, Juanita Laush, Norma Mills, Mary Lou Raffety, Leocadia West*

Verne & Wilma Johnson  
*Gail Johnson*

Marilyn Jones - *Betty Lovett*

Ann Kelley  
*Suzanne & Charles Carlbom, Irene Harms, Jude Nicoletti*

Walter Kelly  
*Virginia L. Grubb, Pat W. North*

Dede & Ben Kirby  
*J. Laurence & Gayle Cable*

Eise Larson  
*ClearPoint LP, Pierre Gallant*

Agnes Lindberg  
*4T Love Team*

Virginia Lockwood  
*Brian Suher*

John Lynch  
*Sandra Millius & Jeff Motsinger*

Dorothy McClarty  
*Anonymous, David & Carol Baker, Theodor & Dorothy Dec, Mary Donovan, Marilyn Frost, Bertha Guptill, Betty Lovett, William Murray, Jane Richardson, Judith Roberts, Ruth & John Talbott, Connie West*

Jessie McKenzie  
*Pat W. North*

Jack McLean - *Mary Lou Leahy*

Pete Mortensen  
*Marlene Acre*

Joan Newman - *Marlene Acre*

Michael Nichols  
*Meg & Stephen James, Patricia Nichols*

Vincent Nicoletti  
*Jane Butler, Barbara Daniels, Angeline Delaurenti, Jan Dysart, Barbara & Leigh Eden, Katherine & Frank Hart, Frank & Rebeca Hatcher, Betty Lovett, Merry Meek, Beverly & Bland Simmons, Vacation Villages of America Inc., Jackie Willhite*

Kit & Marj Nienstaedt  
*Lisa Nienstaedt*

Jens Roger Noet  
*Brian & Elizabeth DeBrie*

Barbara O'Reilly  
*Brian & Elizabeth DeBrie*

Joanne Pinder  
*Theodore & Gladys Wilson*

Helene Piro  
*Helen Asher, Carl & Reta Davis, Brent Fawcett, Donald Lombard, Janet Pendergrass, James & Terrie Piro, Jerry Piro, Josephine Piro, Sam Piro & Lisa Dixon Family, Jim & Mary Sopp*

Barbara Rains  
*Barbara & Jim Brisbois, Helen Dillon, Georgia Duty, Harriet*

Frankel, Dennis & Carlene Hopman, Christy Sly

Margaret Reinke  
*Anonymous, Jeral Beaty, Mavis Case, Gresham Antique Glass Club, James & Carole Hanna, Donald Lombard, David & Constance Manning, Sandra Millius & Jeff Motsinger, June Petticord, Mildred Rushford, Jane & Bill Scott, Sandra Stewart, Ruth & John Talbott*

Fran Sayre  
*Brian & Elizabeth DeBrie*

Ruth Schaefer  
*Rosalie Betschart*

Frances Sherwood  
*Selma Denecke, Helen Kennedy, Georgia Koehler, William & Maxine McGrath*

Maxine Sims  
*Virginia Beatty, Albert & Barbara Bullier, Richard & Marian Carlson, Angeline Delaurenti, Selma Denecke, Virginia Dockrell, Jan Dysart, Virginia L. Grubb, Bertha Guptill, Kirk & Susanne Hamann, Charles & Mary Isaacson, Chiane Kathrens, Betty Lovett, Clarice Norman, Mary Lou Raffety, Richard Shearer, Ruth & John Talbott, Jay Weiser, Connie West, Sara Mae Wiedmaier*

Sarah & Hank Snyder  
*Selma Denecke, Patricia Reading*

Charles Strader  
*Patricia Cudahy*

Ernest Swann  
*LaRhetta Swann*

Neddie Thom  
*James & Anne Holtz*

Richard Vitaliano  
*Merry Meek*

Arlene Walther  
*Buckhead Beef Company, Donna Campbell, William Dalton, Betty Lovett, Sysco Corporation*

Jeri Ward  
*Phyllis & Ted Sherwood, Joyce & James Ward*

Katherine Weidkamp  
*Kenneth & Diane Weidkamp*

Mary Whitney  
*Jan Dysart, Betty Lovett*

Harry Wiedmaier;  
*Donald Lombard, Betty Lovett, Dorothy Mejdell, Mary Lou Munroe, Jeanette Neuburger, Nell & Ronald Pue, Diane Saban, Ruth & John Talbott*

Zandra Winters  
*Gordon & Priscilla Belin, Robert & Peggy Johanson, Liisa Sjoblom, Arduus Stevens*

Alta Wuthrich  
*Linda & Thomas Krippaehne*



## FIND THE JOY IN IMPACTING THE FUTURE

Champion donor and volunteer Marsha Buono was there when the doors of Albertina's Restaurant and Shops opened for business in 1981. Since then, Marsha spends at least eight hours a week volunteering for The Old Kerr Nursery Association, among spending time with her 9-year-old grandson and traveling with her husband Richard. Along with her gift of time, Marsha feels her annual donation to Albertina Kerr is a complementary way to sustain our mission: "Albertina Kerr impacts so many lives in our community in a positive way. I know my time and donations are important to support that effort."

Please contact us to correct any omissions or errors.

## KERR LEADERS & PROFESSIONAL STANDING 2008-09

### Board of Directors

**Roger Cooke, JD, Chair**  
Sr. VP & General Counsel,  
Precision CastParts Corp.

**Douglas D. Morris, JD  
Chair-Elect**  
Partner, Ater Wynne, LLP

**Geoffrey S. Bruce, CPA  
Treasurer**  
Partner, Maginnis & Carey, LLP

**J. Bart McMullan Jr., MD  
Secretary**  
President, Regence BlueCross  
BlueShield of Oregon

**Anton E. Oehlert  
Immediate Past Chair**  
VP & Commercial Loan  
Officer, Union Bank

**Christopher Adamek**  
Practice Director, ACME  
Business Consulting, LLC

**Dave Andersen**  
President, Andersen  
Construction Company

**Shelley Barnes**  
Consumer Representative  
Family Consultant, Oregon  
Health Sciences University

**Doug Bogen**  
Area Manager, Eaton Electrical

**Colin R. Cave, MD**  
Board Chair & Surgeon,  
Northwest Permanente, PC

**Anthony Cracchiolo**  
President, US Bank Equipment  
& Finance

**Nancy Craven**  
Community Volunteer

**Larry Davis**  
Senior Vice President,  
Bank of America

**Priscilla Lewis, RN**  
Region Director of Community  
Services & Development,  
Providence Health & Services

**Celia Murphey**  
Consumer Representative

**Janice Newmark**  
Community Volunteer

**David Reinhart**  
Managing Principal,  
CresaPartners

**Margaret Rowland, MD**  
Chief Medical Officer,  
CareOregon, Inc.

**David Streicher, JD, CPA**  
Attorney at Law/CPA,  
Black Heltterline, LLP

**Serilda Summers**  
Assistant Dean of Residence  
Life, Reed College

**Kathryn Underhill, JD**  
Attorney,  
Juvenile Rights Project

### Honorary

Ken and Ginger Harrison  
Peter Jacobsen  
Maybelle Clark Macdonald

### Emeritus

Jean C. Cory  
Howard N. Dietrich (1910-2009)  
Andy Dignan  
Helen H. Lindgren

### Foundation Trustees

**Kay B. Abramowitz, JD  
Chair**  
Partner, Ater Wynne, LLP

**Jerry Baysinger  
Chair-Elect**  
Co-Founder/President,  
Baysinger Partners  
Architecture, PC

**Keith Meyers, CPA  
Secretary-Treasurer**  
Principal, Perkins & Company

**Anthony J. Seashore  
Immediate Past Chair**  
Principal, TS Construction  
Management

**Jonathan Ater, JD**  
Partner, Ater Wynne, LLP

**Don Barney**  
Retired Principal,  
Barney & Worth, Inc.

**A.F. (Fritz) Bartsch**  
Vice President, Private Client  
Group US Bank

**Christine P. Brown, JD**  
Attorney,  
Garvey, Schubert & Barer

**Alan J. Folkman**  
Retired,  
Columbia Management

**Christopher J. Krenk, MSW**  
President/CEO,  
Albertina Kerr Centers

**David Manougian**  
General Manager, Comcast  
SportsNet Northwest

**Merry Meek**  
Community Volunteer,  
The Old Kerr Nursery  
Association

**Greg C. Mottau**  
Owner, Mottau & Company

**Gary Reddick**  
CEO, Sienna Architecture

**Traci Richardson**  
Director of Service,  
Corporate Sales & Service,  
Trail Blazers Inc.

**James L. Trolinger**  
President, Portland Valve  
and Fitting

**Keren Brown Wilson, PhD**  
President, Jessie F.  
Richardson Foundation

**Ken Thrasher, Ex-Officio**  
President, Compli

### Senior Staff

**Christopher J. Krenk, MSW**  
President & CEO

**Gina Brimmer, LCSW**  
Vice President Youth &  
Family Services

**Jeanne Farr, MA**  
Senior Vice President  
Developmental Disabilities  
Services

**Ron Foster**  
Vice President Facilities

**Jerry Hoffert, MBA**  
Chief Financial Officer

**Jodi Lippert, CFRE**  
Chief Development Officer

**Craig Rusch**  
Chief Information Officer

**Susan Stanley**  
Vice President Human  
Resources

### The Old Kerr Nursery Association Board of Directors

**Ann Uphoff, President**  
**Nancy Craven, 1<sup>st</sup> Vice  
President**  
**Margie Holmes, 2<sup>nd</sup> Vice  
President**  
**Barbara M. Daniels, Secretary**  
**Jim Elliott, Treasurer**

Marie Amacher, Jan Anderson,  
Diane Carskadon, Blanche  
Crook, Joyce Jacobs, Joan  
Loomis, Betsy MacKay, David  
Manning, Merry Meek, Regina  
Mockmore, Carol Morgan,  
Joan Morton, Jude Nicoletti,  
Ann Warner, Connie West,  
Jackie Willhite

### Licensed

- State of Oregon Mental Health & Developmental Disabilities Division
- Oregon Department of Human Services to provide Foster Home Certification

### Certified

- Oregon Department of Special Education
- Medicaid Approved

### Member

- Association of Fundraising Professionals
- National Council for Community Behavioral Healthcare
- National Foster Family Based Treatment Association
- Oregon Alliance of Children's Programs
- Oregon Rehabilitation Association
- Oregon Developmental Disabilities Coalition

### Accredited

A Behavioral Healthcare  
Organization: Joint Commission  
on the Accreditation of  
Healthcare Organizations



# WE WANT TO SEE LASTING CHANGE IN OUR COMMUNITY

## OUR MISSION

Albertina Kerr partners with families and the community to support people with developmental disabilities and mental health challenges to lead self-determined lives and realize their full potential.

## OUR VISION

All children and adults with developmental disabilities and mental health challenges will thrive in nurturing homes and inclusive communities.

It is our goal that Albertina Kerr's services will create a community where all children, adults and families facing mental health challenges and developmental disabilities:

- Live rich and meaningful lives in their communities.
- Have a sense of identity and learn successfully.
- Are supported in connecting with their biological families and live with biological families whenever possible.
- Enjoy the same educational opportunities as their peers.
- Develop the capacity to earn a living wage.
- Learn to live independently and in the least restrictive setting possible.
- Have the choices to participate in the daily life activities of their non-disabled peers.
- Have hopes, dreams, friends and the ability to shape their own futures.

LEARN MORE / VOLUNTEER / GIVE  
ALBERTINAKERR.ORG